



BURLINGTON COUNTY RECYCLING GUIDE

For County Residents, Schools, and Businesses

Provided by the Burlington County Board of Commissioners



What's Inside

Recycling Savings
by the Numbers... 2

Glass Recycling
News 3

OTC's 60th
Anniversary 4

Earth Fair 2024. 5

Curbside
Recycling Guide ... 6

Recycling Program –
Plastic Bags
and Film..... 7

Electronic Waste... 8

Shredded
Paper
Dropoff
Program.... 8

Hazardous Waste .. 9

Recycling Bulbs
and Batteries 9

Clean Communities
Program News
..... 10-11



Burlington County Supports Local Food Donation Programs

By collecting unwanted reusable bags at this year's Earth Fair

It's been two years since New Jersey's plastic bag ban law changed how we bring home our groceries and other store-bought retail goods.

Whether we shop in person or use a delivery service, reusable bags have become the new normal in New Jersey, and many of us have saved up quite a few and now have more bags than we need.

To assist Burlington County residents with a bounty of bags, the Burlington County Commissioners are partnering with reusable bag provider GOATOTE and Farmers Against Hunger to create a drop-off collection site for unwanted reusable bags at this year's Earth Fair.

The annual celebration of sustainability, recycling and stewardship returns to Historic Smithville Park and will be held on Earth Day, Sunday, April 21, from 11 AM to 4 PM.

Gently used bags will be collected, sorted and sanitized and then delivered to Farmers Against Hunger, which will use them as part of its operations to distribute surplus produce from farms and farmers markets to area food banks, soup kitchens and food pantries.

Last year, the organization, which has its headquarters at Burlington County's Rainbow Meadow Park, collected and distributed more than 1.4 million pounds of food that helped feed an estimated 8,000 people weekly.



Commissioner Deputy Director Dan O'Connell, along with Stacey Kennedy and Newell Thompson, from the NJ Agricultural Society display gently used bags donated to Farmers Against Hunger in Delran.

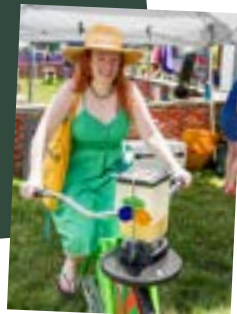
"Switching from single-use bags to reusable ones was an adjustment but it is one that has helped keep significant amounts of plastic out of our limited landfill space and from polluting our environment," said Burlington County Commissioner Deputy Director Dan O'Connell. "The downside is that a lot of us have ended up with more reusable bags than we need. We want to put these extra bags to good use, so we're partnering with Farmers Against Hunger to use them to help feed food insecure families in Burlington County and across the region."

continued on page 4

**SAVE the
DATE**

**EARTH
FAIR**
Sunday
April 21
11 AM - 4 PM
Historic Smithville Park
Eastampton, NJ
**See page 5 for Earth Fair
Info and Events**

*Come pedal your way to
a delicious, delightful
beverage when Wheelie
Good Smoothies returns
to Earth Fair 2024!*



Recycling Saves Tax Dollars and Landfill Space

2023 Burlington County Recycling Program

How Much Your Town Recycled and Saved!

Municipality	Total lbs. Recycled	Landfill Disposal Fee Savings	Municipality	Total lbs. Recycled	Landfill Disposal Fee Savings	Municipality	Total lbs. Recycled	Landfill Disposal Fee Savings
Bass River	198,806	\$9,447	Florence	2,400,771	\$114,085	Pemberton Twp.	3,836,925	\$182,331
Beverly	437,830	\$20,806	Hainesport	1,253,920	\$59,586	Riverside	1,730,792	\$82,247
Bordentown City	772,447	\$36,707	Lumberton	2,189,332	\$104,037	Riverton	548,949	\$26,086
Bordentown Twp.	2,140,243	\$101,704	Mansfield	1,784,873	\$84,817	Shamong*	1,361,075	\$64,678
Burlington City	1,576,364	\$74,909	Maple Shade	2,899,520	\$137,785	Southampton	1,900,223	\$90,299
Burlington Twp.	3,959,232	\$188,143	Medford Lakes	961,186	\$45,676	Springfield	722,970	\$34,356
Chesterfield*	1,142,275	\$54,281	Medford Twp.	5,375,615	\$255,449	Tabernacle	1,529,242	\$72,670
Cinnaminson	3,512,886	\$166,932	Moorestown	4,432,356	\$210,626	Washington	153,436	\$7,291
Delanco	958,462	\$45,546	Mt. Holly	1,883,950	\$89,525	Westampton	1,706,944	\$81,114
Delran	2,864,974	\$136,144	Mt. Laurel	8,013,622	\$380,807	Willingboro	5,181,365	\$246,218
Eastampton	1,151,337	\$54,712	New Hanover	161,718	\$7,685	Woodland	170,023	\$8,079
Edgewater Park	1,450,669	\$68,936	North Hanover	627,591	\$29,823	Wrightstown	111,241	\$5,286
Evesham	8,092,687	\$384,564	Palmyra	1,495,520	\$71,067	MDL Joint Base	818,715	\$38,905
Fieldsboro	123,117	\$5,851	Pemberton Boro	221,145	\$10,509	Total	81,845,168	\$3,889,282

Municipal Landfill Savings based on 2023 Disposal Fee of \$95.04/ton | *Residents contract privately for trash collection

Bales of Recyclables – Ready to Ship to Mills



39,622 Bales Sent to Recycling Mills in 2023

After your recyclables are sorted, the paper, cardboard, plastic bottles, and cans are pressed into 1200–1500 lb. “bales.”

We ship over 700 bales/week to market!

Recyclable Material	# of Bales Shipped
Cardboard	18,841
Paper	11,883
Plastic Bottles, Jugs & Tubs	6,517
Steel/Tin Cans	1,038
Metal Cans	1,343
Total Bales Shipped in 2023	39,622

Commissioner's Message:

I-95 Road Repair Used Burlington County's Recycled Glass



Commissioner Pullion at Recycling Center's Glass Bunker.



Hello friends and welcome to Burlington County's recycling guide. Burlington County launched its regional recycling program more than 40 years ago and it's still going strong.

One example of where recyclables end up and how they can make a difference happened last June when a tanker truck crash and fire caused part of Interstate-95 to collapse in northeast Philadelphia. A temporary roadway opened just 12 days later using foam glass aggregate rocks as fill.

The rocks are manufactured by AeroAggregates from recycled glass collected from Burlington County and other counties and cities in the Greater Philadelphia region. In fact, last year our County shipped more than 7,100 tons of glass to the Pennsylvania company.

Glass bottles and jars are among the materials Burlington County residents can and should be placing in their recycling carts, and this story illustrates how recycling not only works but can make a difference in our everyday lives. Every single glass bottle, jar, cardboard box or piece of paper we recycle correctly can receive a second life that reduces landfill waste and saves taxpayers money (see page 2), so we want to encourage residents to recycle right.

This guide can be a helpful resource with answers to frequently asked questions, news and tips that can help you become a better recycler. Thank you for helping us keep Burlington County sustainable, clean and green!

Sincerely,
Tom Pullion

Tom Pullion
Burlington County Commissioner
Liaison to the Department
of Solid Waste and Recycling

How We Recycle Your Glass

Glass bottles and jars are sorted from other recyclables when they fall through 3" gaps in a series of spinning metal discs and are broken into small pieces (*right*).



AeroAggregates crushes our broken glass into a powder, mixes it with a foaming agent and bakes it into pumice like rocks (*left*).

Glass recycling tips –
AeroAggregates can only use bottle and jar glass, do not recycle other types of glass. Labels are ok, remove caps and lids.



Glass is separated when it breaks and falls through the gaps of the sorting screen discs.

Burlington County's Longtime Recycling Partner Celebrates its 60th Anniversary

Burlington County has had one of the largest and most successful recycling programs in New Jersey, thanks in no small part to a group of parents who dreamed of a brighter future for their children with disabilities.

The parents started the Occupational Training Center with the goal of providing training and meaningful work for adults of all abilities. The nonprofit, founded in 1964, initially operated out of homes, garages, and driveways, before taking over an old Army barracks on Fort Dix and later a building on Woodlane Road in Westampton.

Sixty years later the organization – renamed this year as OTC Services – has grown into one of the largest disability service providers in the state and is an integral part of Burlington County's regional recycling program, which collects, sorts and markets recyclables from all 40 Burlington County municipalities.

OTC also offers vocational rehabilitation, job placement programs, day programs and housing for adults with disabilities.

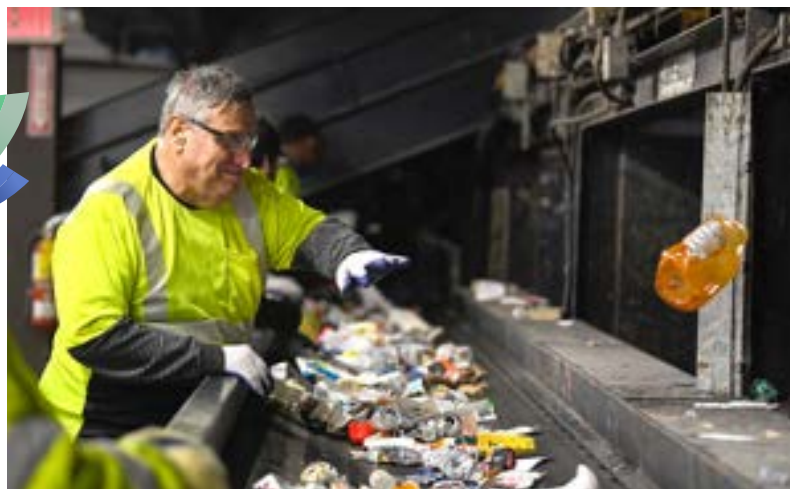
"You won't find a more extensive or successful partnership between a government and nonprofit than the one that has long existed between Burlington County and OTC Services," said Burlington County Commissioner Director Felicia Hopson. "Not only is OTC integral to our daily recycling service, but it also helps hundreds of individuals with disabilities find success through comprehensive job training and work placement. It's an outstanding shared service

that benefits residents, the environment and our county's diverse communities."

Burlington County's partnership with OTC began in the early 1980s when the County first launched its regional recycling program under the leadership of the late Robert Shinn Jr., who was the County's freeholder director at the time. Shinn was committed to the concept of recycling but needed a company to reliably staff a collection program across multiple municipalities. A chance encounter at a Rotary Club meeting attended by Shinn and OTC's then Executive Director Joseph Bender led to the launch of a partnership that has lasted for more than four decades.

During that time, the recycling program has grown dramatically, from its humble beginnings with newspaper collections to the start of its single-stream recycling system in 2015 at the Robert C. Shinn Jr. Recycling Center in Westampton, where recyclables from across the county are brought and sorted.

Today, the program serves all 40 municipalities and collects more than 155 tons of recyclables daily while providing training and employment opportunities to more than 40 individuals with disabilities.



An OTC Success Story!

Mike Kripner (pictured above) has worked for OTC for 45 years! He recently retired from sorting recyclables and now works in OTC's benchwork assembly program.



Commissioner Tom Pullion and OTC Director Isaac Manning congratulate Mike on his outstanding service.

Earth Fair Reusable Bag Donation *continued from page 1*

In addition to the reusable bags drop-off, Earth Fair will feature plenty of presentations, performances and activities related to sustainability, recycling and environmental stewardship. There will be an artisan marketplace featuring upcycled and recycled goods, a pop-up nature center, blender bike smoothies, kids activities, a plant swap, music, food trucks and a beer garden.

In addition to the reusable bag collection, the recycling tent at the fair will host drop-off bins for plastic bags/film and small e-waste items such as ear buds, cell phones and power cords.

"Protecting our environment is a team effort but it doesn't take a ton of work or huge sacrifices," said Commissioner Allison Eckel. "Small changes can make a world of difference, and Earth Fair is the place to learn more while also having fun."

Besides the Earth Fair collection, there are several other locations in Burlington County that accept unwanted, gently used reusable bags:

- **Farmers Against Hunger Headquarters at Rainbow Meadow Park**, 173 Creek Road, Delran (drop off is in the front of the building between 10 AM and 4 PM).
- **Ladies in Transit Holistic CDC Pantry**, 4134 Route 130, Beverly (bags accepted Wednesdays, Thursdays from 10 AM to 12:30 PM).
- **Commissioned 2 Serve International Church Pantry**, 200 Sunset Road, Willingboro (drop off on Tuesdays from 11 AM to 3 PM and Thursdays from 1 PM to 4 PM).
- **Jacob's Chapel AME Church Pantry**, 316 Elbo Lane, Mount Laurel (drop off Wednesdays from 3 PM to 5 PM and 2nd and 4th Saturday each month).
- **Christian Community Center**, 275 Holean Street, Mount Holly (drop off Mondays and Wednesdays from 11 AM to 2 PM).
- **Christian Caring Center**, 378 Lakehurst Road, Browns Mills (drop off weekdays from 10 AM to 3 PM).

EARTH FAIR

**Sunday
April 21
11 AM - 4 PM**

**Historic Smithville Park
Eastampton, NJ**

Presentations & Demos

Music

Artisan Marketplace

Music

Plant Swap

Kids Activities

Sustainable Living Tent

Food Trucks

Beer Garden



www.co.burlington.nj.us/parks



Pop-Up Recycling Dropoffs at Earth Fair 2024

Plastic Flower Pot DROPOFF



Along the gravel path to
park entrance across from
event parking.

Pots should be free of
dirt and debris.

Reusable Bags DROPOFF



In the Sustainable
Living Tent

Bags should be clean,
dry, and gently used.

Plastic Film & Bags DROPOFF



In the Recycling Tent

Clean, dry plastic wrap
from cases of water, towels,
tissues, etc.

Dry Cleaning bags, bubble
wrap, air pillows, plastic
shipping mailers, such as
Amazon blue and white mailers.

Small E-waste DROPOFF



In the Recycling Tent

Tablets, e-readers, cell phones,
computer mice, cell phones,
power cords, small circuit
boards, ear buds, mp3 players,
and iPods.

No large electronic items.

The 2024 Sustainable Living Tent Will Feature:

- New electric SUV Equinox from GM
- Native Plants for your yard
- Energy Conservation opportunities with PSE&G
- Electric yard care equipment – low noise and solar recharging
- Tips on safe and wise water use.
- AeroAggregates – Road rocks made from recycled glass
- Curbside Composting Collection Subscription Service
- Special Dropoff for Reusable Bags



Curbside Recycling Guidelines

Only Recycle Items Shown Below



Paper & Cardboard

No paper plates, towels, tissues, or napkins.
No wrapping paper with foil or glitter.



Plastic Bottles & Food Containers

Screw-top caps on plastic bottles OK.
No Styrofoam or lids.



Glass Bottles & Jars

No ceramics or glassware.



Metal CANS Only

No paint or aerosol cans.

How to Prepare Your Recyclables

Recyclables should be clean, dry, and empty.

NEVER bag recyclables; instead, place them loose in your cart.

Recycling should be at the curb by 6am on collection day.

Cardboard must be **emptied, flattened, folded** and placed in recycling container or stacked neatly and loosely next to it.

Jammed cardboard in container may result in it being half emptied.

EMPTY and RINSE
all bottles, jars,
and containers.

DO NOT CRUSH
plastic bottles
or metal cans.

Questioning an item?
Scan this code
for disposal options.



Cartons

No frozen food
containers.



Pizza boxes that look like this **CAN** be recycled

DO NOT recycle pizza boxes that look like this

Pizza boxes must be clean and empty.
A small amount of grease is okay.

Do NOT Recycle:

- **NO STYROFOAM**
- No yard waste
- No plastic bags, film, or wrap
- No batteries or hazardous waste
- No electronic waste
- No plastic with a 
- No food soiled items

Recycling carts with incorrect items WILL NOT BE SERVICED!

Questions? Call 609-499-1001 or email recycle@co.burlington.nj.us.

Earth Day is a Great Day for Volunteer Groups to Take the Trex® Plastic Recycling Challenge!

Plastic bags and film, such as shipping mailers, bubble wrap, beverage and paper goods case wrap, and bread bags cannot be put in curbside recycling because they jam sorting equipment.

Volunteer groups (schools, civic groups, religious organizations, sports groups, corporate green teams, etc.) can help keep plastic bags and film out of our landfill by taking the Trex Company's Recycling Challenge. Trex uses these separately collected clean and dry plastics to make outdoor decking and furniture. Groups that collect and deliver 1,000 lbs. of plastic bags and film to a collection center will win a handsome Trex bench from recycled plastic.

In 2022, the Burlington County Commissioners set up a collection center at the Robert C. Shinn, Jr. Recycling Center (OTC) in Westampton, giving volunteer groups a convenient spot to bring their collected plastics. "I'm proud to announce that volunteer groups have delivered over 27,000 lbs. of plastic film and bags to our dropoff," said Commissioner Tom Pullion, liaison to the



Commissioner Tom Pullion helps Medford Green Team deliver plastics collected for the Trex Challenge.

Department of Solid Waste and Recycling. "Thanks to their dedicated efforts, the equivalent of 2 million plastic bags were kept out of our landfill."

Trex Challenge Program Details:

- Choose a 12-month collection time frame.
- Register your group at **NexTrex.com**.
- When you register, select a plastic recycling partner (the County Recycling Center is listed as "OTC").
- Trex provides groups with 3 collection bins.
- Collect a minimum of 1,000 lbs.
- Weigh, record and attach pictures at **my.trex.com**.
- Deliver bags of plastic to the County Recycling Center (listed as OTC on the Trex site). Acme, Kohls, Wegmans, and Whole Foods may also take them.

When you reach your goal, Trex will ship your bench! To learn more about the Trex program, including a list of acceptable plastics, visit **burlcorecycles.com**.

For other Trex Program questions, or if your group plans to deliver plastic to the OTC recycling center, email recycle@co.burlington.nj.us or call 609-499-1001.

Where can individual residents recycle plastic bags and film?

Residents may bring their plastic bags & film to:

- The Recycling Tent at Earth Fair on April 21st (see page 5).
- County Resource Recovery Complex - open 6 days/week (see page 8).
- County paper shredding events (see page 12).



The Rutgers Recycling Certification Class begins their tour of the recycling center at the inbound tipping floor.

Come See How We Sort Your Recyclables

Burlington County community groups and high schools are invited to tour the Robert C. Shinn, Jr. Recycling Center in Westampton to learn how we sort your recyclables into marketable materials.

- Group tours are available Monday through Thursday from 8 AM to 3 PM.
- Tours are limited to Burlington County organizations.
- Reservations are on a first come basis.
- The minimum group size is 15 participants.
- For safety reasons, the minimum age requirement is 14 years old.

If you can't tour in person, please check out our virtual tour of the Robert C. Shinn, Jr. Recycling Center – simply visit **burlcorecycles.com**.

How to Recycle Old TVs and Other E-waste

By NJ State Law, it is illegal to place TVs, computers, fax machines and printers in trash or recycling containers.

WHERE TO RECYCLE THEM?

GOODWILL LOCATIONS

listed below accept these items for recycling. No other type of E-waste is accepted.

Bordentown Store	594 Rte. 206, Bordentown
Lumberton Store	1626 Route 38, Lumberton
Maple Shade Store	2834 Route 73 N., Maple Shade
Medford Donation Center	148 Old Marlton Pike, Medford
Mount Laurel Donation Center	3111 Rt. 38, Suite 20 Larchmont Commons Shopping Center, Mount Laurel
Willingboro Store	4314 Route 130 N., Willingboro

MUNICIPAL E-WASTE DROPOFFS

Local residents only:

Bordentown City	Lumberton	North Hanover
Bordentown Twp.	Mansfield	Palmyra
Burlington Twp.	Maple Shade	Pemberton Borough
Cinnaminson	Medford Lakes	Pemberton Twp.
Delran	Medford Twp.	Tabernacle
Evesham	Moorestown	Wrightstown
Florence	Mount Laurel	

Identification required. No businesses allowed. Hours of operation vary. Check your town's website or the RecycleCoach app for details.



Burlington County E-waste Dropoff for County Residents

In 2023, we received and recycled over 300,000 lbs. of E-waste!



Dean Andreola, OTC site manager and Commissioner Tom Pullion with TVs ready for recycling.



COUNTY E-WASTE DROPOFF for County Residents ONLY!

Burlington County Resource Recovery Complex
22000 Burlington-Columbus Road, Florence, 08518

Monday - Friday: 7am – 5pm, Saturday: 7am – Noon

For a full list of the E-waste items accepted visit burlcorecycles.com.

Two Special Recycling Drop-offs at the Resource Recovery Complex



Recycling Coordinator, Rachel Gransden and Commissioner Tom Pullion drop off their shredded paper.

Shredded Paper Dropoff

For bags of pre-shredded paper delivered in clear plastic bags.

Shredded paper only!

No credit cards or CDs.

Plastic Bag & Film Dropoff

This dropoff is for our Trex program.

Residents may drop off clean, dry: bubble wrap, air pillows, bread bags, case wrap from water bottles and paper goods, and plastic shipping envelopes at the Complex.

Learn more about Trex's plastic program on page 7.



For additional information regarding our special drop off programs, visit burlcorecycles.com

Burlington County Household Hazardous Waste Facility (HHWF)

Located in the Resource Recovery Complex –

22000 Burlington-Columbus Road, Florence, NJ 08518

Hours of operation: Tuesday – Friday, 7am to 3pm and Saturdays, 7am to 12pm

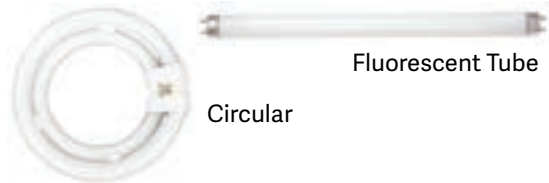


Hazardous Lightbulbs

These bulbs are hazardous waste and bring them to the HHWF.

NEVER PUT INTO TRASH OR RECYCLING!

FLUORESCENT BULBS



Fluorescent Tube

Circular

HIGH DENSITY DISCHARGE (HIDS)

Do not use tape on the bulbs



COMPACT FLUORESCENT BULBS (CFLs)

These CFLs can also be recycled at your local Home Depot or Lowes



Spiral

Capsul

Quad-tube

Globe

Square

Flood

For more information, Check out burlcorecycles.com or download our free **Recycle Coach App!**



Got prescription meds?

Visit www.njconsumeraffairs.gov/meddrop/Pages/Locations.aspx to find a local dropoff location for proper disposal.

Accepted Household Hazardous Waste Items

The Burlington County Household Hazardous Waste Facility (HHWF) accepts many types of hazardous waste from county residents. Items include:

- **Motor Oil & Antifreeze**
- **Flammables** such as Petroleum Distillates, Paint Thinners/Varnish, Oil-based Paint, Adhesives, Automotive Products
- **Toxics** such as Rust Remover, Paint Remover, Pool Chemicals, Weed Killer
- **Pesticides, Insecticides & Herbicides** such as Chlordane, Flea Powder, Sevin & Malathion
- **Corrosives** such as Oven Cleaner, Acids & Household Lye, Ammonia-based cleaners, Driveway Cleaner
- **Latex Paint** is water based and not hazardous. If nearly empty, let contents dry and place in trash with **LID OFF**.
- **Fluorescent Tubular Lamps**
- **Compact Fluorescent Bulbs** can be recycled at Home Depot and Lowes
- **Fire Extinguishers and Flares**
- **Small Propane Tanks – 1 lb or less**
- **Lead Acid Batteries** Scooter, Car, Truck, Motorcycle, Marine and Laptop
- **Household Batteries** *Rechargeable batteries* found in cordless tools and household items, toys, cell phones, tablets, etc. *Alkaline batteries are not hazardous waste* Please place them in your household trash.

UNACCEPTABLE ITEMS INCLUDE:



- **NO Medications**
- **NO acetylene, unidentified, or commercial tanks or other cylinders.**

Note: Residents – check your municipal website or RecycleCoach to see if your town has a local hazardous waste dropoff.

Questions? Email hazwaste@co.burlington.nj.us

Household Battery Recycling

The two main types of household batteries are **alkaline** and **rechargeable**.



Alkaline batteries come in AAA, AA, C, D, and 9 volt sizes. They do not contain mercury. **Put them in your household trash.**



Rechargeable batteries come in the same sizes as alkaline batteries, but also include batteries used for laptops, portable tools and toys. Rechargeable batteries include Nickel Cadmium (Ni-Cd), Lithium Ion (Li-Ion) and Small Sealed Lead Acid (SSLA/Pb) batteries. **Recycle these at Home Depot, Lowes, Staples and other locations listed at www.Call2Recycle.org.**

NEVER put batteries in your recycling! Batteries have caused fires at our recycling center!



Burlington County Clean Communities

**Clean Communities Program
Interactive Features now on
Recycle Coach. Scan now for litter
education, events, and more:**



New Jersey Clean Communities is a statewide, comprehensive, litter-abatement program created by the passage of the Clean Communities Act in 1986.

Burlington County Clean Communities offers multiple programs to tackle litter within the county and to change littering behavior by

providing education on its impact on our local environment. Current programs include funding for litter education performances and assemblies at schools and county events, seasonal litter cleanup events in county parks and waterways, and litter removal from county owned and maintained land and roadways.

For more information on our programs, please visit www.co.burlington.nj.us/343/clean-communities.

Burlington County Clean Communities

Spring Litter Cleanup Schedule



April 27 –
Amico Island Park

May 4 –
Willingboro Lakes Park

**Events are
9am to Noon
Rain or
Shine**

For sign-up information, email
cleancomm@co.burlington.nj.us



Commissioner Deputy Director Dan O'Connell, County Clean Communities Coordinator Rachel Grandsen, and Park Maintenance Staff John Mastowski IV hosting the Pennington Park litter cleanup.



Clean Communities County Park Litter Cleanup Results

In 2023, 340 volunteers donated 1,020 hours of their time to collect a total of 2,160 pounds of litter from three different county parks during four separate events.

Date	Location	# of Volunteers	Lbs. of Litter
April 2023	Pennington Park & Newton's Landing Trail, Delanco	101	820
May 2023	Amico Island Park, Delran	105	820
October 2023	Amico Island Park, Delran	49	400
November 2023	Willingboro Lakes Park, Willingboro	85	120

Clean Communities County Road Litter Cleanup Results with OTC Litter Crew

In 2023, the OTC Road Litter Crew worked 2,448 hours to collect a total of 17,670 pounds of litter on 294 miles of county roadways during 148 cleanup days.

County Road Cleanups	Miles	Bags of Litter Collected	Pounds Collected	Hours Worked
148	294	1,178	17,670	2,448

Test Your Litter Knowledge!



1. When balloons burst and land in the water, they look like jellyfish, which are turtles' favorite food.
☐ True ☐ False
2. Pet waste left on a lawn or on the street will get washed into our rivers and watersheds when rain falls through the _____.
_____.
3. Cigarette butts are the number one littered item on U.S. roadways and the number one item found on beaches and in waterways worldwide.
☐ True ☐ False
4. How long does it take a plastic bag to decompose if littered?
☐ up to one week ☐ up to 10 months ☐ up to 100 years ☐ up to 1,000 years

Answers: 1. true, 2. storm drain, 3. true 4. up to 1,000 years

2023's Top 10 Littered Items in Burlington County Parks

1. Bottle Caps
2. Plastic Bottles
3. Straws
4. Styrofoam
5. Cigarette Filters
6. Plastic Wrap & Film
7. Candy & Snack Wrappers
8. Construction Materials
9. Plastic Toys
10. Textiles

Cigarette Filters Are Litter!

Cigarette filters are one on of the top littered items globally. In Burlington County parks, where cigarettes are banned, they are still in the top five litter items found during cleanups. 95% of cigarette filters are made of plastic cellulose acetate fibers. Littered filters break down into microplastics and leach toxic chemicals into water and soil. They can cause fires when not properly extinguished and be mistaken as food by wildlife. A report from the World Health Organization states that every year, the tobacco industry costs the world more than 8 million human lives, 600 million trees, 494,000 acres of land, 24 billion tons of water and 98 million tons of CO2 emissions.

It is not environmentally, socially, or legally acceptable to flick cigarette filters on the ground, and the behavior must be changed to protect all it could impact.

Please, don't flick your cigarettes; stick them in the garbage!



What Goes Up, Must Come Down

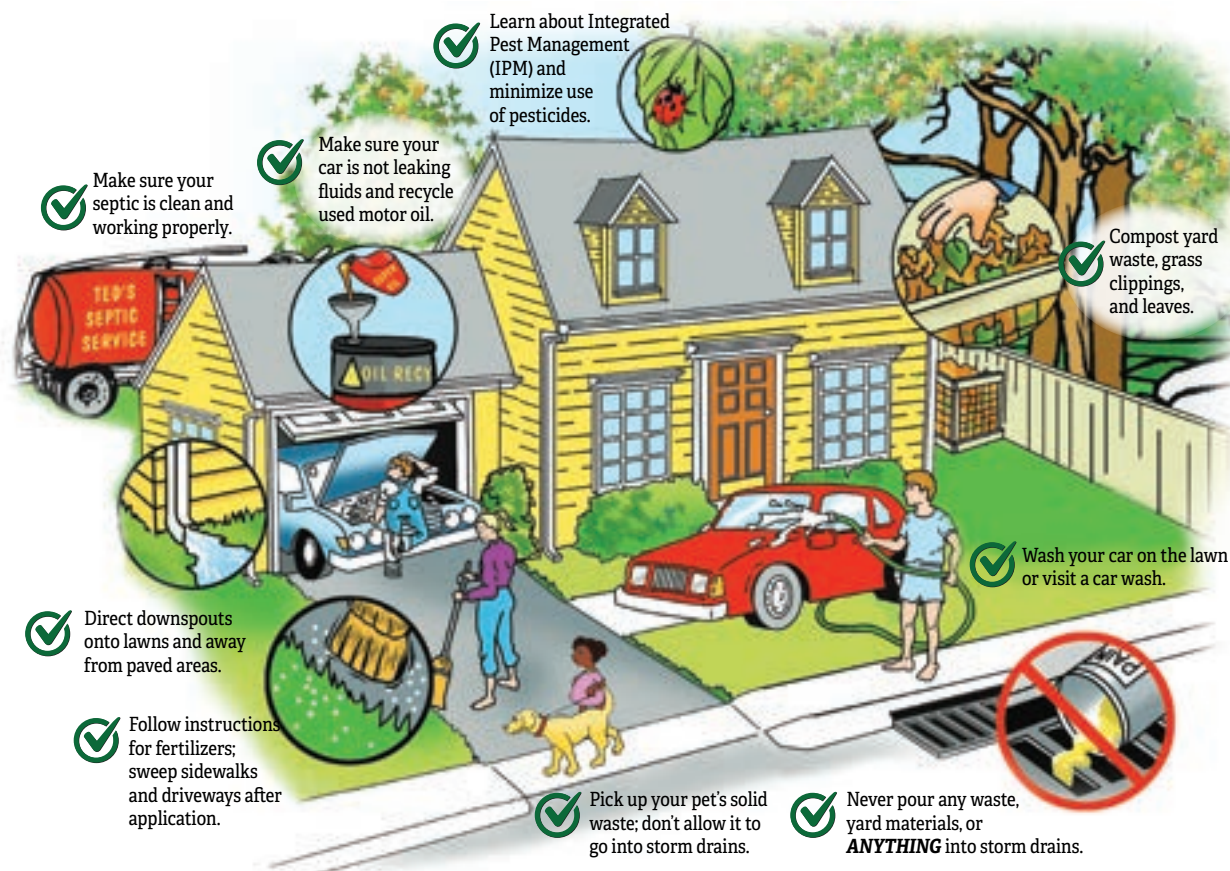
Balloons can travel far and wide, reaching a variety of habitats. When not properly disposed of, they are unsightly and a health hazard to wildlife through ingestion and entrapment. Whether they are mylar, latex, or "compostable," balloons do **not** biodegrade, they only break down into harmful microplastics.

Consider these alternatives to balloon releases:

- Tree planting
- Floating flowers
- Bubbles
- Organic material confetti toss (leaves, flowers, etc.)
 - Candle lighting
 - Flying wish papers



Steps You Can Take to Help Prevent Stormwater Pollution



Litter and leaves can clog storm drains, causing rainwater to back up onto your property and into your home. Debris that washes into a storm drain can travel underground through pipes and come out into lakes, rivers, streams and even the ocean. Litter can attract rodents and disease, posing a health risk; litter also poses a risk to animals and marine life.

Never dump anything into the storm drain!

Don't use a hose to wash contaminants such as oil spills or antifreeze off your driveway. Do not drain your pool, spa, or fountain water into the storm drain, and don't over-water chemically treated lawns and gardens.

What CAN you do? Adopt the storm drain near your home by volunteering to regularly inspect it and keep it clean. Remove litter from your property and street, even if it is not yours. Make sure your recycling bins don't overflow. If your recyclables fall out of the bin, pick them back up. Encourage your neighbors to keep their storm drains clean.

Learn more at co.burlington.nj.us/322/Stormwater.

SAVE THE DATE
APRIL 21

EARTH FAIR

See page 5 for more information!

SPRING 2024 PAPER SHREDDING EVENTS

MARCH 24 & MAY 5

Events are **SUNDAYS** from 9 AM – 1 PM*
Rain or Shine

“For this year’s spring cleaning, the Burlington County Board of Commissioners is pleased to offer two free paper shredding events to help you properly and safely dispose of old financial papers and sensitive documents. Please save the dates and take advantage of this great County service!”



– Commissioner Tom Pullion,
liaison to the Department of Solid Waste and Recycling

Burlington County Resource Recovery Complex (Landfill)

22000 Burlington-Columbus Road
Florence, NJ 08518 (Exit 52A off I-295)

***EVENTS MAY END PRIOR TO 1 PM IF SHREDDING TRUCKS REACH CAPACITY.**

- ☒ Remain in your car.
- ☒ Put paper in your trunk or truck bed; our staff will remove it from your vehicle.
- ☒ **Confidential files ONLY – ABSOLUTELY NO MAGAZINES/JUNK MAIL!**
- ☒ Limit of 4 bags/boxes of unshredded paper weighing no more than 10 lbs. each. Shredded paper is also accepted.
- ☒ No businesses or non-profits.

SPECIAL PLASTIC COLLECTION AT SHRED EVENTS

Bag up separately and bring clean and dry plastic bubble wrap, plastic shipping mailers, and plastic wrap from cases of water and paper products.

BURLINGTON COUNTY RESIDENTS ONLY.

Identification required. Questions?
Call 609-499-1001 or email recycle@co.burlington.nj.us



PO Box 6000
Mount Holly, NJ 08060

PRST STD
U.S. Postage
PAID
Bellmawr, NJ
Permit #80

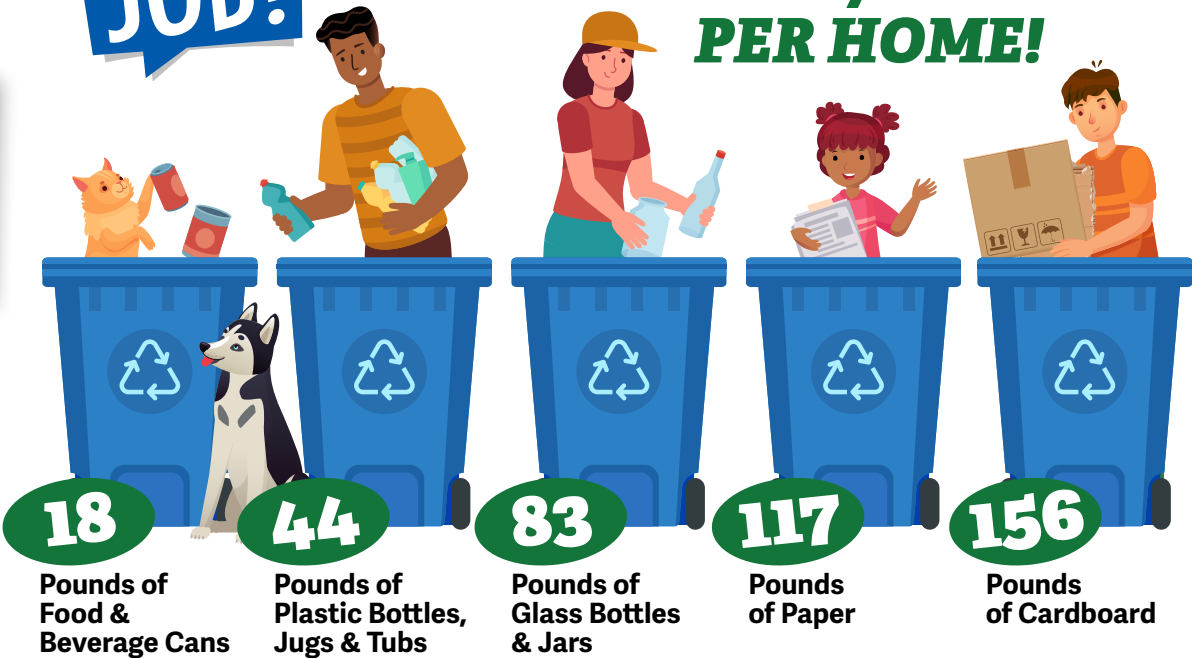
ECRWSS

*****ECRWSSDDM*****

RESIDENTIAL CUSTOMER

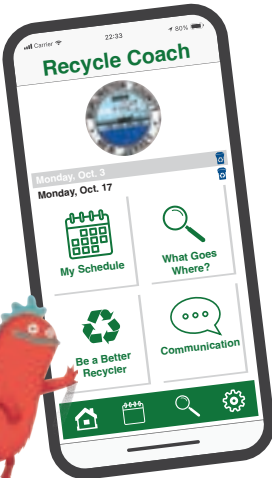
GREAT JOB!

In 2023, Burlington County Families Recycled
OVER 400/LBS. PER HOME!



DOWNLOAD
BURLINGTON
COUNTY'S

RECYCLE COACH APP



Over 50,000 County residents rely on the County’s **free RecycleCoach app** for recycling updates.
With the app, you can:

- Receive alerts about paper shredding events.
- Report problems including missed pickups and broken cart lids.
- Use the “What Goes Where” tool for info on handling TVs, batteries, hazardous waste, and more.
- Find your recycling collection schedule.

No smartphone? No problem!
For a computer-friendly version, visit burlcorecycles.com.

